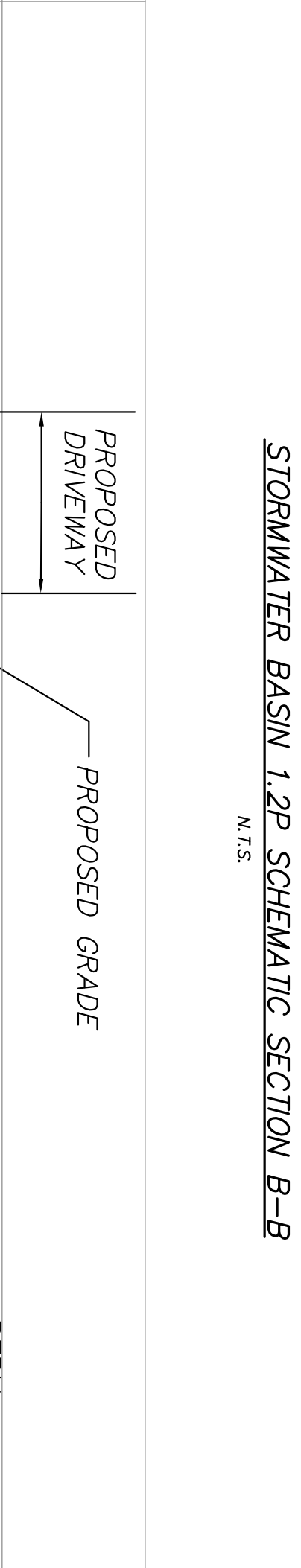


- \* THE POUNDS ARE CONSTRUCTED TO BE UTILIZED AS TEMPORARY SIGNMENT BARS DURING CONSTRUCTION.
- \* THE POUNDS ARE TO BE REMOVED TO THE POUNDS HAVE BEEN PERMANENTLY STABILIZED. THE FOLLOWING SHALL BE ACCOMPLISHED:
  - A. CLEAN BARS AND OUTLET SMOOTHINGS AND REMOVE 6" PERMANENTLY EXPOSED RIVER PIPE, CRUSHED STONE AND FILTER FABRIC.
  - B. 6" SLOID PIPE SHALL BE PLACED TO DISCHARGE DOW OF 6" SLOID PIPE SUR 35 FEET PER FEET.
  - C. REPLACE THE PERMANENT PIPE AND CRUSHED STONE. DO NOT REPLACE FILTER FABRIC.
  - D. ESTABLISH THE FINAL VEGETATION IN THE POND.
  - E. PERFORM THE FINAL VEGETATION AND EROSION CONTROL MEASURES TO PREVENT FURTHER EROSION.
  - F. PERFORM THE FINAL VEGETATION AND EROSION CONTROL MEASURES TO PREVENT FURTHER EROSION.
- \* THE PERMANENT RIVER POND BARRIS IS CONSTRUCTED THE AT SPECIFIED ELEVATIONS.

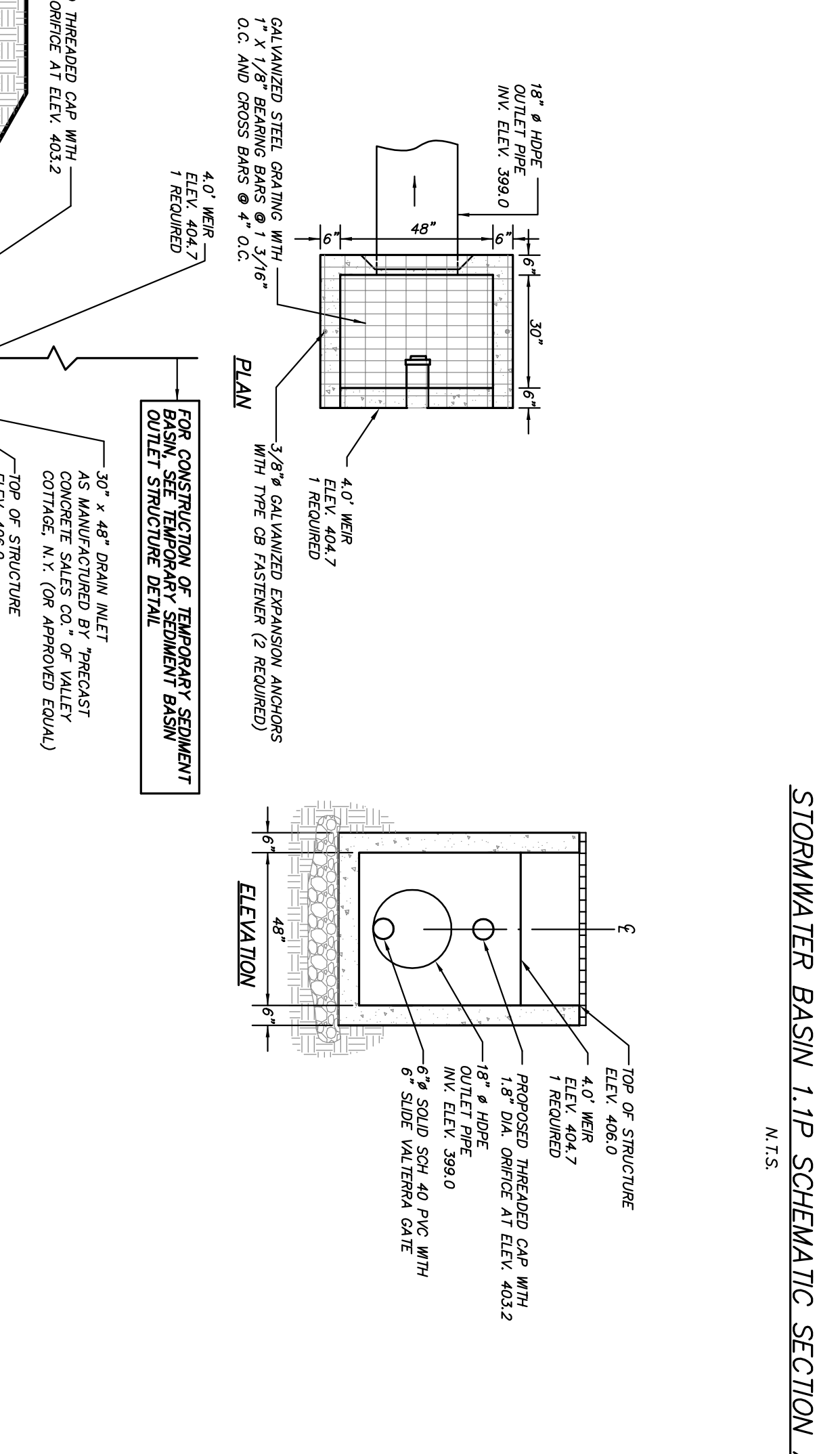
- \* THE POUNDS ARE CONSTRUCTED TO BE UTILIZED AS TEMPORARY SIGNMENT BARS DURING CONSTRUCTION.
- \* THE POUNDS ARE TO BE REMOVED TO THE POUNDS HAVE BEEN PERMANENTLY STABILIZED. THE FOLLOWING SHALL BE ACCOMPLISHED:
  - A. CLEAN BARS AND OUTLET SMOOTHINGS AND REMOVE 6" PERMANENTLY EXPOSED PIPE, CRACKED STONE AND FALTER BARS.
  - B. 6" SLOID PIPE SUR 45 DEGREES PER FOOT.
  - C. REPLACE THE PERMANENT PIPE AND CRACKED STONE. DO NOT REPLACE FALTER BARS.
  - D. ESTABLISH THE FINAL VEGETATION IN THE POND.
  - E. PERFORM THE NECESSARY WORK TO REPAIR AND MAINTAIN THE EXISTING POND BOTTOM.
  - F. PERFORM NECESSARY BASIN TO PERMANENT STORMWATER POND DETENTION.
- \* THE PERMANENT REEF BAR WITHIN IS CONSTRUCTED THE AT SPECIFIC ELEVATIONS.

2. Plants shall conform with the American Association of Nurseryman Standards in all ways including dimensions.

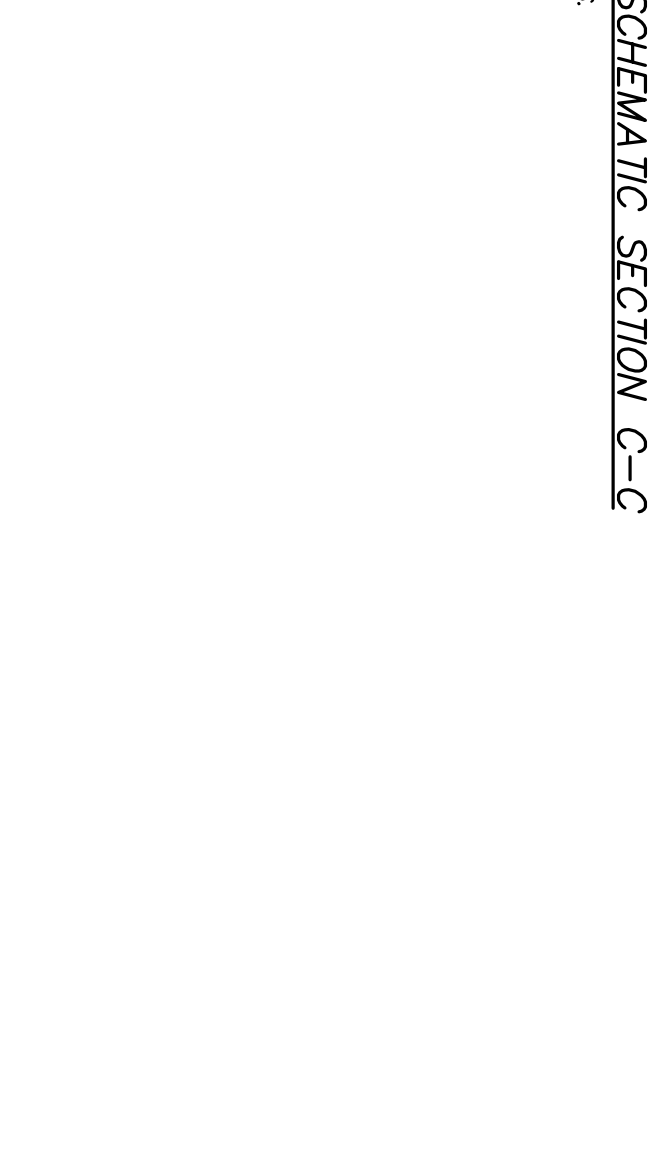
- [illegible]



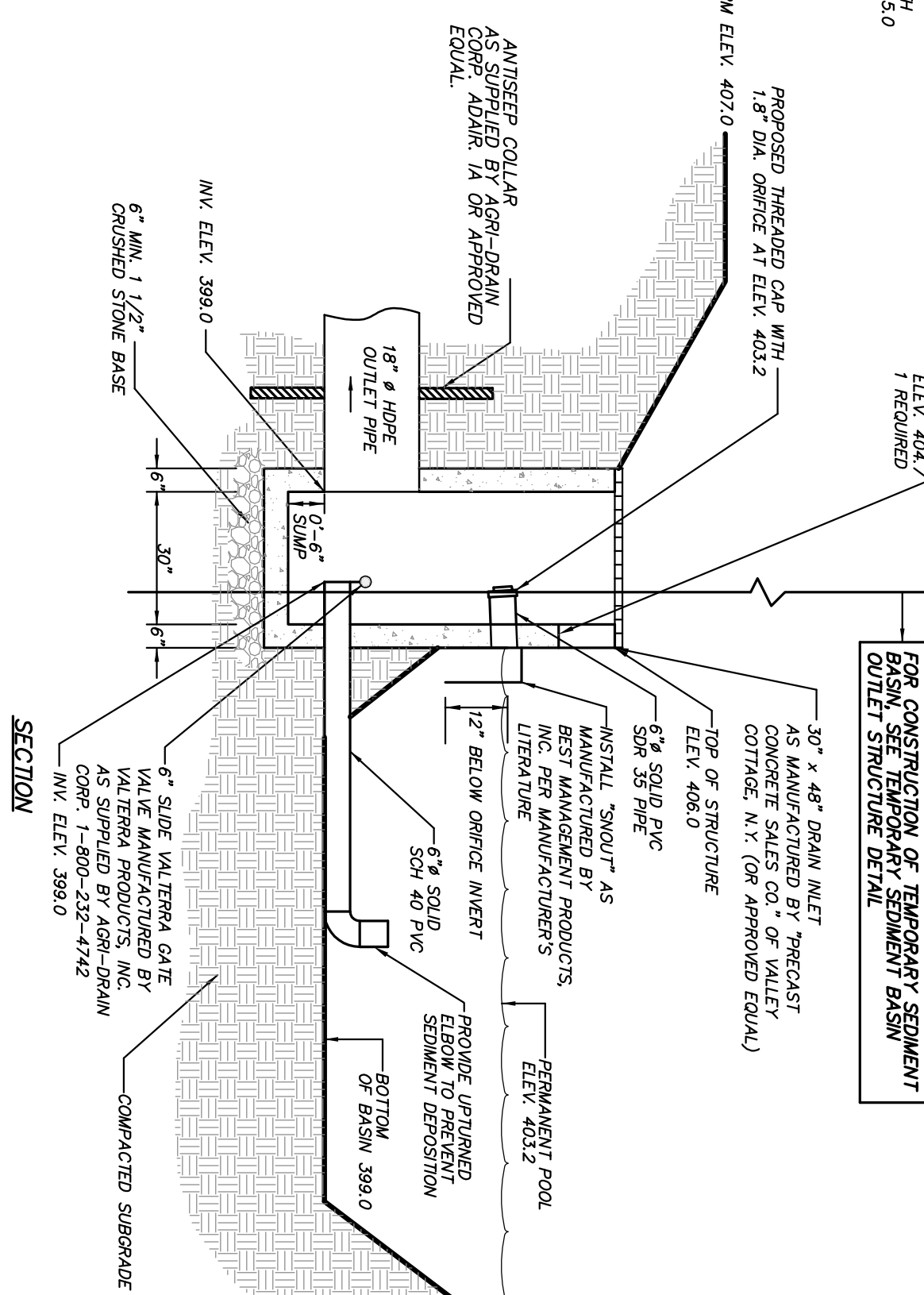
N. T.



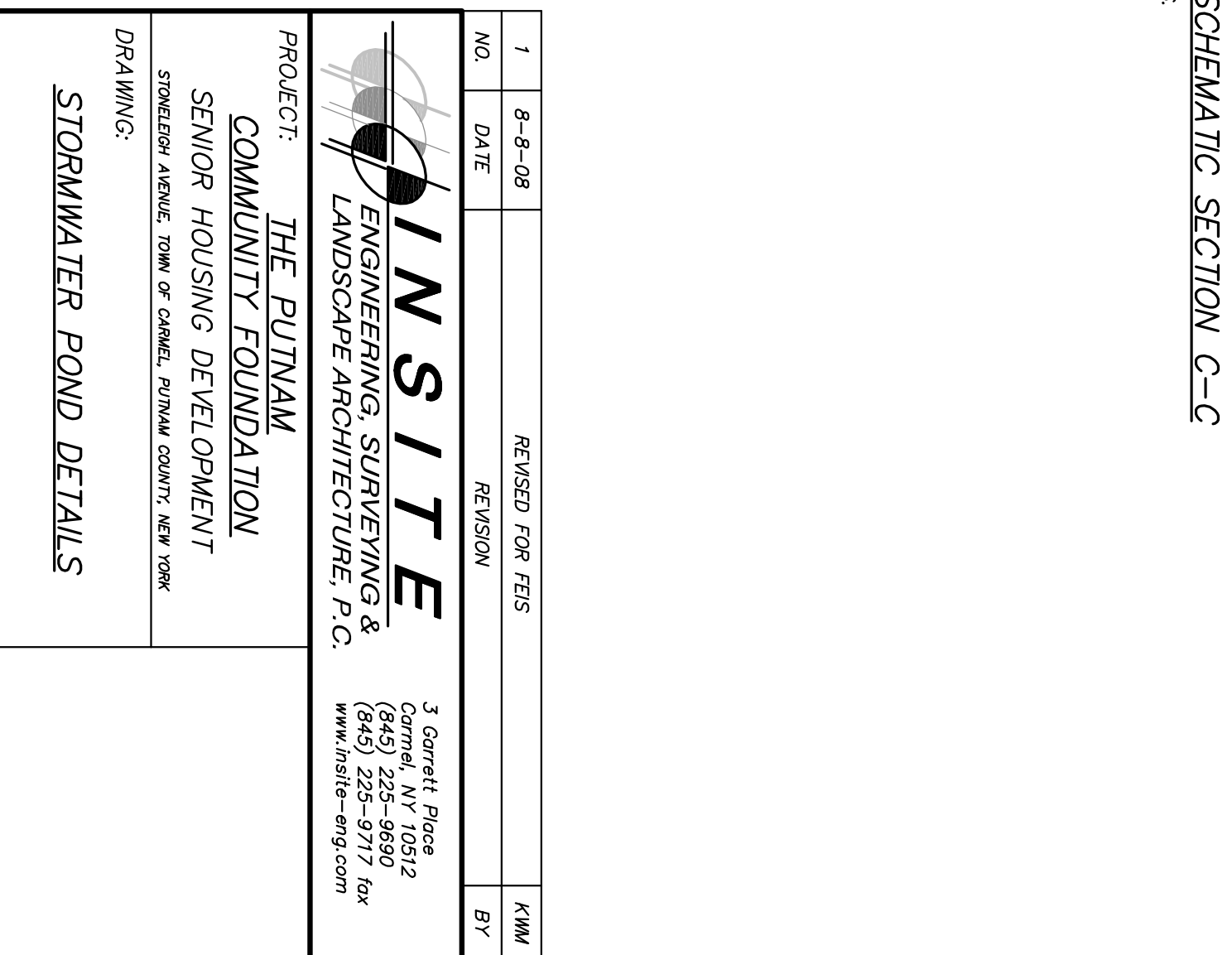
N.T.S.



1



(N.T.S.)



(N.T.S.)

1	8-8-08	REUSED FOR FEIS	KMM
NO.	DATE	REVISION	BY



LANDSCAPE ARCHITECTURE, P.C.

PROJECT: THE PUTNAM  
COMMUNITY FOUNDATION

## SENIOR HOUSING DEVELOPMENT

STONELEIGH AVENUE, TOWN OF CAHREL, PUTNAM COUNTY, NE

### STORMWATER POND DETAILS

PROJECT NO.	03198.100	PROJECT MANAGER	J.J.C.	DRAWING NO.	12	14
DATE	5-9-07	DRAWN BY	E.M.S.			
SCALE	N.T.S.	CHECKED BY				

D-4